

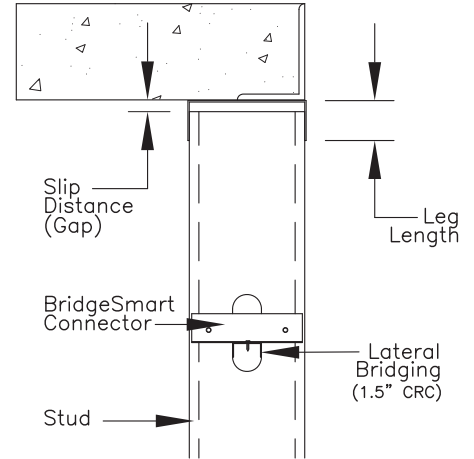
Product Category: Deflection Track 09.22.16
Product Name: Single Leg Deflection (Slip) Track

Product Description:

The single leg deflection track is part of a head of wall deflection system. The system allows for vertical movement of the primary structure above the track to move without transferring any vertical loads to the stud wall. The studs do not get fastened to the deflection track and a row of lateral bridging must be installed within 12" of the track to prevent movement and rotation of the studs.

Material:

15mil - 25 gauge, 0.0157" design thickness, 0.0149" min thickness (50ksi).
 18mil - 25 gauge, 0.0188" design thickness, 0.0179" min thickness (33ksi).
 19mil - 20 gauge, 0.0200" design thickness, 0.0190" min thickness (50ksi).
 30mil - 20 gauge, 0.0312" design thickness, 0.0296" min thickness (33ksi).
 33mil - 20 gauge, 0.0346" design thickness, 0.0329" min thickness (33ksi).
 ASTM A1003 coating.



2" Leg Deflection Track with 1/2" Slip Distance					
Yield Strength	15mils (25ga EQ)	18mils 25ga	19mils (20ga EQ)	30mils (20ga NS)	33mils (20ga S)
33ksi	n/a	30	n/a	92	113
50ksi	34	n/a	57	n/a	n/a
2-1/2" Leg Deflection Track with 3/4" Slip Distance					
Yield Strength	15mils (25ga EQ)	18mils 25ga	19mils (20ga EQ)	30mils (20ga NS)	33mils (20ga S)
33ksi	n/a	20	n/a	61	75
50ksi	22	n/a	38	n/a	n/a